

# Cyclone Preparation

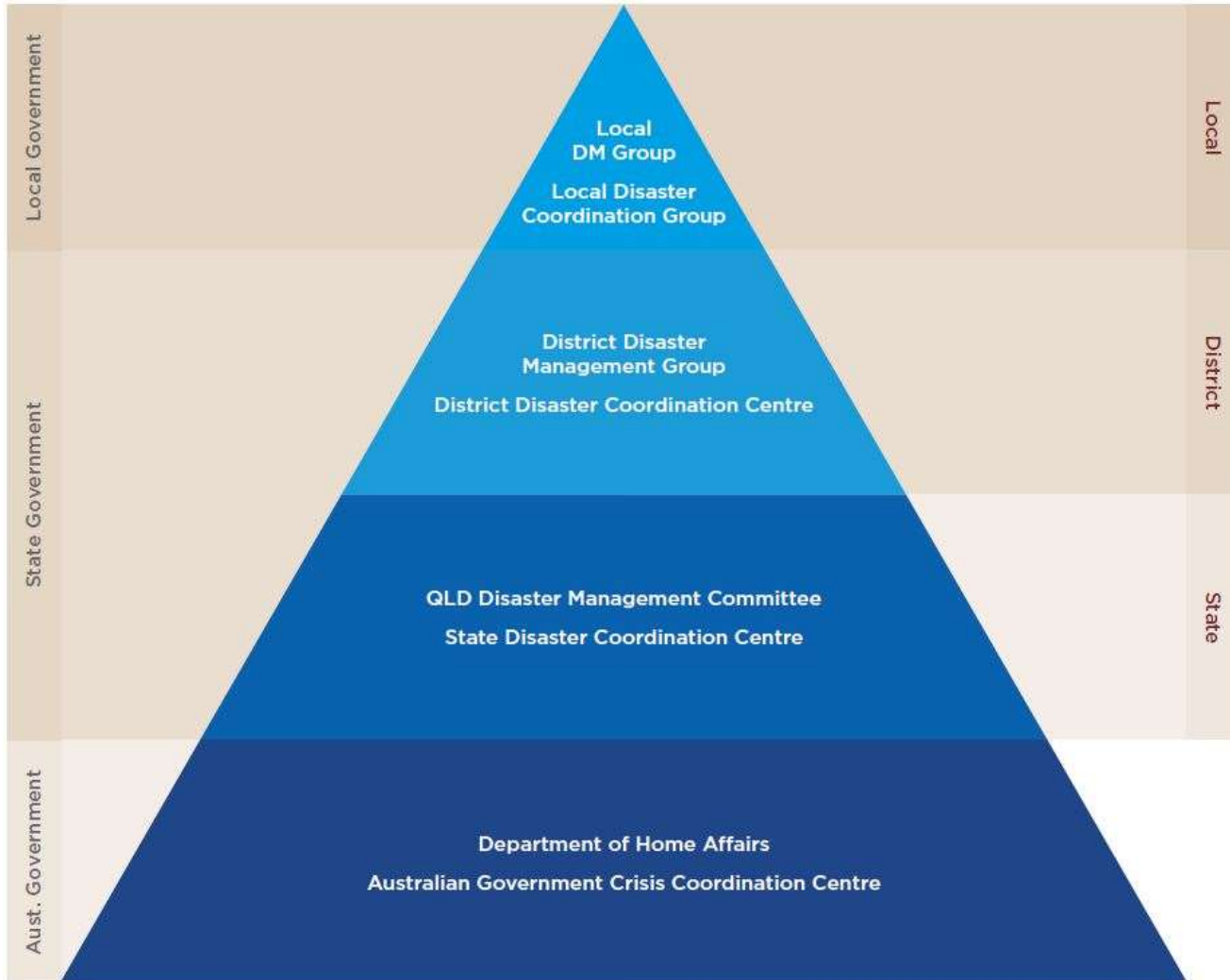
Presentation Created by Sgt Ali DUGGAN

Innisfail Police Station

November 2024

NATIONAL ARRANGEMENTS

STATE ARRANGEMENTS



# Queensland Disaster Management Structure

QPS operate within both the DDMG and LDMG

The LDMG is the local group, it is run by Local Government - the council but there is a police officer embedded in the LDCC (Local Disaster Coordination Centre). The Chair of the LDMG is the Mayor.

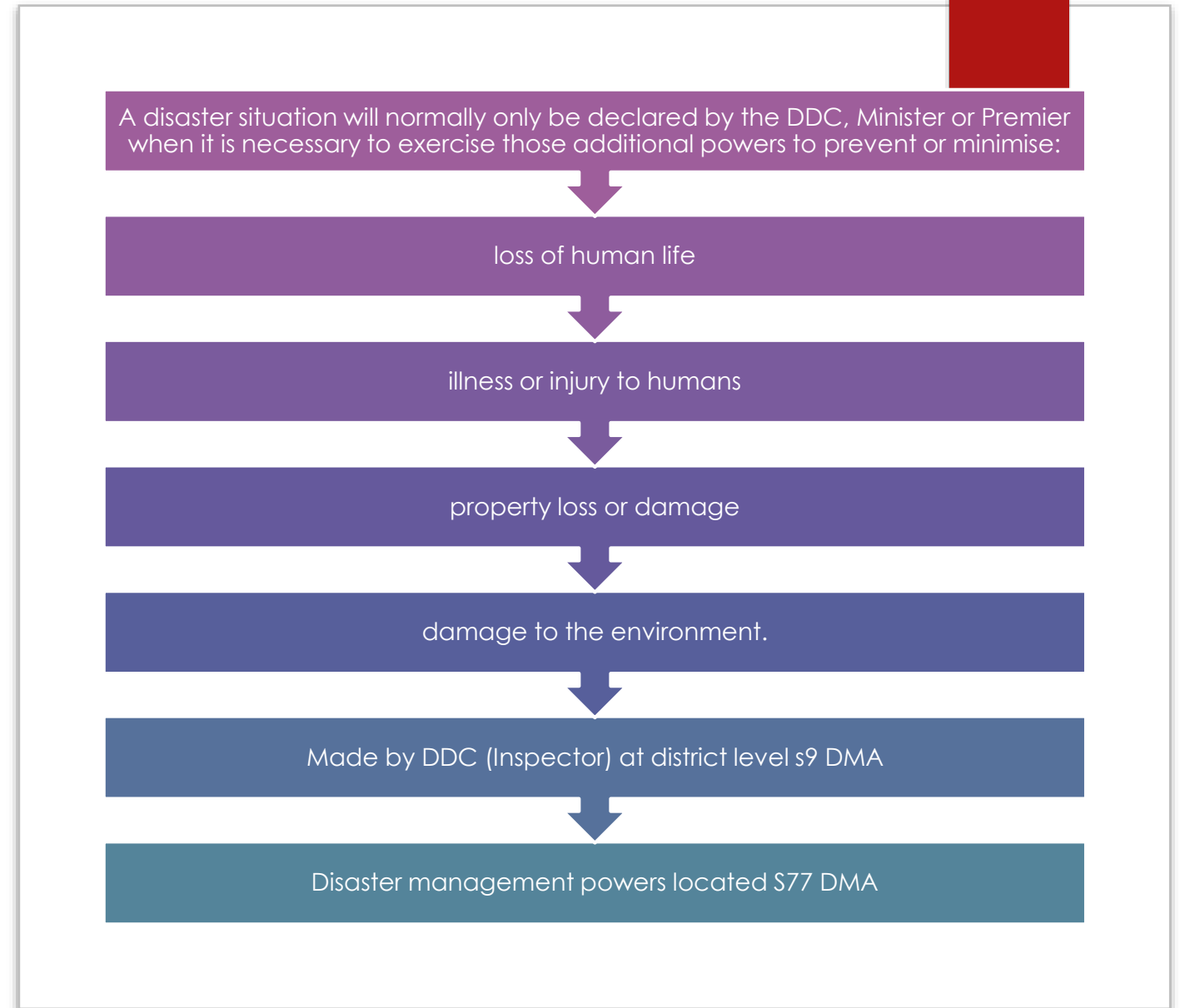
The member of the LDMG is currently OIC Innisfail Station plus proxy.

The DDMG is the district level and the District Disaster Coordinator (DDC) chairs this group. The Inspector is the DDC. In a time of disaster e.g. if a cyclone hit, the Inspector has the authority to declare the disaster on behalf of the commissioner. S 9 DMA and in line with PSBA.

The DDMG is the link between the local group and the state level group. If the local group needs something and can't do it themselves, they request assistance from District. If district can't assist, they request to state and so on. This is how we get the army for example DACC request sent through to SDCC.

Each agency has members who can come together during a time of disaster and help get things back on track e.g. Ergon, Telstra, NBN, QH, Department of Communities, HPW and council.

# Who makes decisions?



# Alerts and Advice

## ▶ Australian Warning System

### What are the warning levels?

**There are three warning levels:**

**Advice (Yellow):**

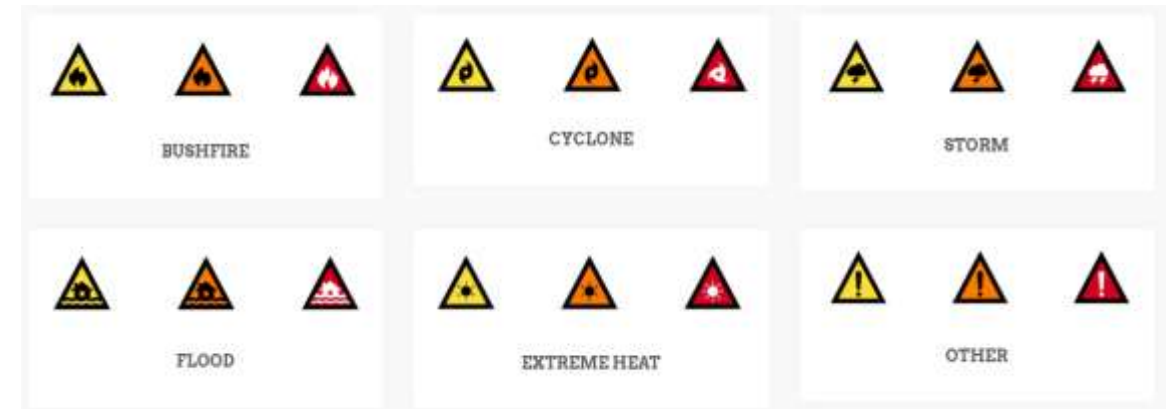
An incident has started. There is no immediate danger. Stay up to date in case the situation changes.

**Watch and Act (Orange):**

There is a heightened level of threat. Conditions are changing and you need to start taking action now to protect you and your family.

**Emergency Warning (Red):**

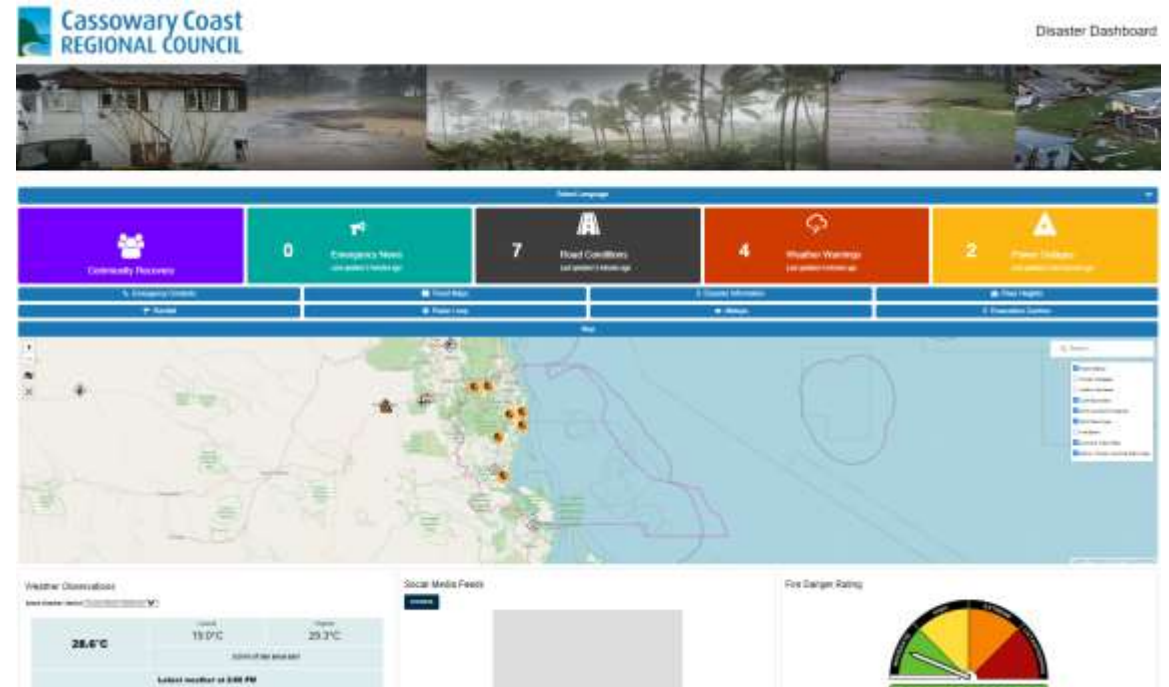
An Emergency Warning is the highest level of warning. You may be in danger and need to take action immediately. Any delay now puts your life at risk.





# Alerts and Advice

- ▶ Australian Warning System
- ▶ Bureau of Meteorology
- ▶ Emergency Alerts
- ▶ Disaster Dashboard – google or <https://disaster.cassowarycoast.qld.gov.au/>
- ▶ ONLY USE POINTS OF TRUTH!! NEVER SOCIAL MEDIA MESSAGING.



# Disaster Management Act s77 – General Powers

- ▶ General powers - ONLY AFTER DECLARATION HAS BEEN MADE and in consultation with DDC.
- ▶ (1) A relevant district disaster coordinator or a declared disaster officer may do all of the following—
- ▶ (a) control the movement of persons, animals or vehicles within, into, out of or around the declared area for the disaster situation;
- ▶ (b) give a direction to a person to regulate the movement of the person, an animal or a vehicle within, into, out of or around the declared area;
- ▶ (c) evacuate persons or animals from the declared area or a part of the area;
- ▶ (d) enter a place in the declared area; [s 77] Disaster Management Act 2003 Part 4 Provisions for declarations of disaster situation Current as at 4 December 2020 Page 61 Authorised by the Parliamentary Counsel
- ▶ (e) take into a place in the declared area the equipment, persons or materials the officer reasonably requires for exercising a power under this subdivision;
- ▶ (f) contain an animal or substance within the declared area;

# Principals of Cyclone Preparation

- ▶ Be prepared
- ▶ Have a plan – will you leave? If so, where will you go?
- ▶ Clean up your yard of rubbish, and tidy pre cyclone season of chairs, Trim trees, check on neighbours and family members etc
- ▶ Have a cyclone kit at the ready – portable radio, torch, batteries, cash, water containers, dried or canned food, can opener, first aid kit, portable stove, matches, waterproof bags, important phone numbers etc
- ▶ Park vehicles under shelter if possible with handbrake on.





# Principals of Cyclone Preparation

- ▶ Tune in to local radio or TV for information and warnings, ABC radio, Council Disaster Dashboard
- ▶ Have an evacuation kit packed – include clothing, any medications, important photos and documents (i.e. birth certificate, passports etc) baby formula, nappies, valuables.
- ▶ Be prepared should you be required or choose to evacuate – make sure someone knows where you go.
- ▶ If you have a generator, test it, ensure there is fuel. Ensure there is ventilation, and it is appropriately located NOT within the dwelling.





If its  
flooded,  
Forget it!

# Be Prepared

- ▶ Should emergency services attend your address, be prepared to evacuate.
- ▶ Understand this is not taken lightly and if authorities are conducting an evacuation, it is important you listen and comply with instruction given
- ▶ Listen on the radio and tv for alerts and important information.
- ▶ Only listen to information from 'points of truth' this means Bureau of Meteorology SES, Police, Fire or Ambulance not Facebook!
- ▶ Charge up power banks, phones, tablets, laptops
- ▶ Ensure your vehicles are fueled up.
- ▶ Consider withdrawing cash prior to incident
- ▶ Secure credit/debit cards





The image shows two police officers from behind, wearing high-visibility yellow safety vests with reflective silver stripes. The word 'POLICE' is printed in large, bold, red-outlined letters on the back of the vests. The officer on the left has a blue and white checkered pattern on the lower back of the vest. The officer on the right is wearing a black watch on their left wrist. In the background, other people in similar vests and white hard hats are visible, suggesting an emergency scene.

POLICE

## When emergency services arrive

- ▶ Have a plan
- ▶ Pack a kit
- ▶ If emergency services come knocking, please leave when asked or understand the risk.
- ▶ It may not be Police, could be SES or QFS
- ▶ Try to stay calm and listen to the advice being given.

# When the cyclone passes over



- ▶ If you are still home when the cyclone passes;
  - ▶ Disconnect all electrical items
  - ▶ Use battery powered radio from your kit for updates
  - ▶ **STAY INSIDE!** Don't be tempted to go outside for a look, especially as the eye passes over.
  - ▶ Find a strong part of the house, away from windows.
  - ▶ Keep your kit with you
  - ▶ Everyone in the house stay together not in different rooms.



# After the Cyclone

- ▶ Once the Cyclone has passed consider;
  - ▶ Check for gas leaks
  - ▶ Watch for fallen powerlines
  - ▶ Don't use electrical appliances if wet
  - ▶ Listen to radio for warnings and advice
  - ▶ Watch for damage to buildings and other structures, trees
  - ▶ Do not enter flood water
  - ▶ Don't go sightseeing
  - ▶ Check on/help neighbours, family or friends
  - ▶ Don't make unnecessary phone calls.
  - ▶ Boil water until told otherwise



# Cyclone Kit

- ▶ Items to consider when making up your own kit
  - ▶ Water bottles
  - ▶ Non-perishable food
  - ▶ Medication/hearing aids/mobility aids/puffer/insulin/glasses etc
  - ▶ Pet food
  - ▶ Insect repellent
  - ▶ Toilet paper
  - ▶ Toothbrush and toothpaste
  - ▶ Blanket
  - ▶ Radio and batteries
  - ▶ Torch and batteries
  - ▶ Power bank/chargers etc
  - ▶ Personal documents
    - ▶ Birth/Marriage certificates & Passports
    - ▶ Insurance documents
    - ▶ USB with important documents scanned.

# Other Considerations

- ▶ Review insurance policies on a regular basis
- ▶ Check emergency kits to ensure food is in date, batteries are new
- ▶ Discuss any plans with members of the household
- ▶ Familiarise yourself with local Cyclone Shelter and other resources in your local area.
- ▶ Help your neighbours
- ▶ Stay informed – Community hubs for help





THANK YOU